



# ALG

## Live Events

# HIRE CATALOGUE

PA SYSTEMS - STAGE LIGHTING - STAGING - TRUSSING - EVENT HIRE

[WWW.ALG-UK.COM](http://WWW.ALG-UK.COM)

ALL PRICES SUBJECT TO DISCOUNTS & EXCLUDE VAT

0121 458 4457

[INFO@ALG-UK.COM](mailto:INFO@ALG-UK.COM)

0791 876 5593



# LIGHTING EQUIPMENT

## CONTENTS

CONSOLES	21
CONTROLLERS	22
MOVING HEADS	23
LED LIGHTS	26
FIXED EFFECTS	28
EFFECTS	30
GENERIC FIXTURES	31
DIMMERS	34
ACCESSORIES	35
LIGHTING CABLE	36
BAND LIGHTING PACKAGES	87
PARTY LIGHTING PACKAGES	95
CORPORATE LIGHTING PACKAGES	101

## GRAND MA2 ONPC CONSOLE AND ARTNET SYSTEM PACKAGE



REAL-TIME CONTROL FOR 4,096 PARAMETERS  
1X MA ONPC COMMAND WING  
1X MA ONPC FADER WING  
CUSTOM RACKMOUNT PC WITH MA ONPC AND MA 3D INSTALLED

1 X ELATION ARTNET  
1X ELATION DMX SPLITTER

WIFI CONNECTIVITY FOR MA REMOTE  
ETHERCON RJ45 CAT5E - 100MTR

DAY: £250.00 WEEK: £750.00

LIGHTING - CONSOLES

### MA ONPC 2 COMMAND WING

REAL-TIME CONTROL FOR 2,048 PARAMETERS IN COMBINATION WITH GRANDMA2 ONPC

18 FADER EXECUTOR BUTTONS,  
6 FADER EXECUTORS (60 MM),  
6 BUTTON EXECUTOR,  
4 ENCODERS  
2 X A/B FADERS (100MM)  
1 X LEVEL-WHEEL (DIMMER)

2 X DMX OUT & 1X DMX IN (XLR 5PIN)  
MIDI IN/MIDI OUT  
TIMECODE (XLR 3PIN)

JUST CONNECT VIA USB TO ANY PC RUNNING GRANDMA2 ONPC

DAY: £150.00 WEEK: £450.00



### MA ONPC 2 FADER WING

REAL-TIME CONTROL FOR 2,048 PARAMETERS IN COMBINATION WITH GRANDMA2 ONPC  
45 FADER EXECUTOR BUTTONS,  
15 FADER EXECUTORS (60 MM),  
15 BUTTON EXECUTOR,

4 X DMX OUT (XLR 5PIN)

JUST CONNECT VIA USB TO ANY PC RUNNING GRANDMA2 ONPC

DAY: £100.00 WEEK: £300.00





## SHOW MAGIC SL PLUS SOFTWARE AND PC

CONTROL FOR 2,048 PARAMETERS  
 FX GENERATOR  
 CUSTOMISABLE USER SCREEN  
 16 MULTITRACK OUTPUTS  
 MIDI OUTPUT (VIA USB TO MIDI DEVICE)  
 ARTNET OUTPUT (VIA LAPTOP RJ45 PORT)



1 X DMX OUT(XLR 5PIN)

DAY: £40.00 WEEK: £120.00

## ELATION SCENE SETTER-48



48 DMX CHANNELS  
 24 SIMULTANEOUS CHASES  
 FADER & FLASH BUTTON ON EACH CHANNEL  
 SEPARATE SPEED & FADE TIME CONTROL  
 A/B SCENE MASTER  
 GO BUTTON & TAP SYNC

1X DMX OUT (XLR 5PIN)  
 MIDI IN/MIDI OUT/MIDI THRU

DAY: £35.00 WEEK: £105.00

## ELATION DMX DUO

96 DMX CHANNELS (INTELLIGENT LIGHTS)  
 8 DMX FX CHANNELS (ON/OFF EFFECTS)  
 8 CHASES (99 STEPS EACH)  
 AUDIO TRIGGER  
 SEPARATE SPEED AND FADE CONTROL

RS232 (INPUT ON REAR)

- 3 PIN XLR IN/OUT (INTELLIGENT LIGHTS)
- 3 PIN XLR (FX OUT)

DAY: £15.00 WEEK: £45.00



## TRANSCENSION LIGHT AND EASY LED CONTROLLER



4 CHANNEL DMX CONTROLLER FOR LED FIXTURES  
 UP TO 32 CHANNELS OF 8 LED GROUPS  
 8 COLOUR PRESETS, 4 BANKS, 32 TA  
 8 PROGRAMMABLE CHASE BANKS, UP TO 32 SCENES

DAY: £10.00 WEEK: £30.00



## ELATION PLATINUM 5R BEAM

PHILLIPS MSD PLATINUM 5R  
 12 COLOURS + OPEN  
 8 REPLACEABLE ROTATING GOBOS  
 8-FACE ROTATING PRISM  
 FROST FILTER (HYBRID EFFECT FOR WASH)  
 11/13/16 DMX CHANNEL MODES  
 POWERCON IN  
 3PIN/5PIN DMX IN/OUT  
 SAFETY CABLE  
 WEIGHT: 15.5 KG

DAY: £50.00 WEEK: £150.00

## ELATION RAYZOR Q12

12 X 15W QUAD LED RGBW  
 RGBW COLOUR MIXING  
 15/17/37 DMX CHANNEL MODES  
 POWERCON IN/OUT  
 5PIN DMX IN/OUT  
 SAFETY CABLE  
 WEIGHT: 9.0 KG

DAY: £31.25 WEEK: £93.75



## ROBE COLOURSPOT 575AT

PHILLIPS MSR 575/2  
 COLOUR WHEEL 1: 9 COLOURS + OPEN  
 COLOUR WHEEL 2: 8 REPLACEABLE COLOURS + OPEN  
 GOBO WHEEL 1: 9 REPLACEABLE STATIC METAL GOBOS  
 GOBO WHEEL 2: 7 REPLACEABLE ROTATING GLASS GOBOS  
 3-FACE ROTATING PRISM  
 FROST FILTER  
 MOTORISED FOCUS  
 MOTORISED IRIS  
 19/21/27/29 DMX CHANNEL MODES  
 16AMP TAIL LEAD  
 3PIN/5PIN DMX IN/OUT  
 SAFETY CABLE  
 WEIGHT: 32.0 KG

DAY: £50.00 WEEK: £150.00





## ROBE COLOURSPOT 250AT

PHILLIPS MSR 250/2  
COLOUR WHEEL: 10 REPLACEABLE COLOURS + OPEN  
GOBO WHEEL: 7 REPLACEABLE ROTATING GLASS GOBOS  
INTERCHANGEABLE 3-FACE ROTATING PRISM  
OPTIONAL FROST FILTER  
MOTORISED FOCUS  
14/16/18/20 DMX CHANNEL MODES  
16AMP TAIL LEAD  
3PIN/5PIN DMX IN/OUT  
SAFETY CABLE  
WEIGHT: 20.5 KG

DAY: £35.00 WEEK: £112.50



## ROBE COLOURWASH 250AT

PHILLIPS MSR 250/2  
CMY COLOUR MIXING  
COLOUR WHEEL: 6 REPLACEABLE COLOURS + OPEN  
EFFECT WHEEL: BEAM SHAPER & FROST FILTER  
MOTORISED FOCUS  
14/16/18/20 DMX CHANNEL MODES  
16AMP TAIL LEAD  
3PIN/5PIN DMX IN/OUT  
SAFETY CABLE  
WEIGHT: 20.5 KG

DAY: £35.00 WEEK: £112.50



## STUDIO DUE SPACEFLOWER 3000

STI 3000W (THERMAL PROTECTION)  
WEATHERPROOF (IP23)  
MANUAL 150° TILT  
MOTORISED 150° PAN  
BUILT-IN CONTROL PANEL OR DMX512 CONTROL  
6 DMX CHANNEL MODES  
WEIGHT: 50.0 KG

DAY: £150.00 WEEK: £450.00





## STUDIO DUE CS-2

2 X STI 250W 28V (SUGGESTED)  
TWO UNIT MOTORISED PAR64 SYSTEM  
ELECTRONIC PROGRESSIVE DIMMER  
SINGLE UNIT TILT: 315°  
DUAL PAN: 270°  
BUILT-IN CONTROL PANEL OR DMX512 CONTROL  
WEIGHT: 22.0 KG  
CAN BE FLOOR MOUNTED OR FLOWN

DAY: £30.00 WEEK: £150.00

## STUDIO DUE CS-4

24X STI 250W 28V (SUGGESTED)  
FOUR UNIT MOTORISED PAR64 SYSTEM  
ELECTRONIC PROGRESSIVE DIMMER  
SINGLE UNIT TILT: 315°  
QUADRUPLE PAN: 270°  
BUILT-IN CONTROL PANEL OR DMX512 CONTROL  
WEIGHT: 31.0 KG  
CAN BE FLOOR MOUNTED OR FLOWN

DAY: £50.00 WEEK: £300.00





### MILTEC BATTEN2 1812

18 X 12W RGBW (QUAD LED'S)  
30° BEAM ANGLE  
4/5/7/72 DMX CHANNEL MODES  
POWERCON IN/OUT  
5PIN DMX IN/OUT  
SAFETY CABLE  
WEIGHT: 3.7 KG

DAY: £14.00 WEEK: £42.00



### CHAUVET STRIKE 4

4 WW 100W LED'S  
49° BEAM ANGLE  
79° FIELD ANGLE  
0-30HZ STROBE RATE  
4 DIMMER SPEEDS  
SELECTABLE PULSE WIDTH MODULATION (PWM)  
1/3/4/9 DMX CHANNEL MODES  
POWERCON IN/OUT  
3/5PIN DMX IN/OUT  
SAFETY CABLE  
WEIGHT: 20.5 KG

DAY: £30.00 WEEK: £90.00

### LANTA FIREBALL PAR64 QUAD™

18 X 8W RGBW (QUAD LED'S)  
30° BEAM ANGLE  
4/5/8 DMX CHANNEL MODES  
POWERCON TAIL LEAD  
3PIN DMX IN/OUT  
SAFETY CABLE  
WEIGHT: 2.1 KG

DAY: £15.00 WEEK: £45.00







## CHAUVET COLORADO™ 3 IP

18X ULTRA-BRIGHT LEDS PER POD  
RGB COLOUR MIXING  
3/4/9/12 DMX CHANNEL  
3PIN DMX IN/OUT  
WATERPROOF (IP66)  
SAFETY CABLE  
WEIGHT: 8.2 KG

DAY: £20.00 WEEK: £60.00

## CHAUVET COLORADO™ COLOR-CON

4-CHANNEL DMX CONTROLLER FOR CHAUVET COLORADO™ SERIES  
16 EDITABLE PROGRAMS (8 COLOUR-WASHES, 8 COLOUR CHANGING)  
8 PROGRAMMABLE SHOWS WITH 100 STEPS

DAY: £10.00 WEEK: £30.00





## MARTIN WIZARD EXTREME

LAMP: MSD 250  
7 SOLID COLOURS, 8 SPLIT COLOURS, 2 OPEN POSITIONS  
13 GOBOS + OPEN  
STAND ALONE OR DMX 512  
3PIN DMX IN/OUT  
SAFETY CABLE  
WEIGHT: 14.5 KG

DAY: £20.00 WEEK: £60.00

## MARTIN DC-1 MANIA

100W HALOGEN LAMP  
53° SPREAD ANGLE  
3 COLOUR + OPEN AND SPLIT COLOUR OPTION  
MANUAL FOCUS  
VARIABLE EFFECT ROTATION SPEED & DIRECTION  
STAND ALONE MODE  
SAFETY CABLE  
WEIGHT: 8.9 KG

DAY: £15.00 WEEK: £45.00



LIGHTING - FIXED EFFECTS

## MARTIN PR-1 MANIA

PHILLIPS 6958/10H 250W  
MANUAL FOCUS WITH 25° OR 32° SPREAD ANGLE  
COLOUR SLOT FOR INTERCHANGEABLE COLOUR FILTER  
ROTATING INTERCHANGEABLE GOBO  
VARIABLE EFFECT ROTATION SPEED & DIRECTION  
STAND ALONE MODE  
SAFETY CABLE  
WEIGHT: 8.9 KG

DAY: £15.00 WEEK: £45.00







## MARTIN DESTROYER X250

250W 24V HALOGEN LAMP  
12 PATTERN GOBO WHEEL, 7 WITH COLOUR & 5 WHITE  
STAND ALONE OR DMX 512  
3PIN DMX IN/OUT  
SAFETY CABLE  
WEIGHT: 7,0 KG

DAY: £15.00 WEEK: £45.00

## KAM LASER DMX STAR CLUSTER

100MW RED & 40MW GREEN LASER  
70+° SPREAD ANGLE  
SOUND TO LIGHT SENSITIVITY & DMX512 CONTROL  
SAFETY CABLE  
WEIGHT: 8.9 KG

DAY: £15.00 WEEK: £45.00



## SOURCE COLOURBLADE 250W

MULTI COLOUR  
MULTI GOBO  
SOUND ACTIVATED  
DICHROIC COLOUR FILTERS  
AUTOMATICALLY SCROLLS THROUGH COLOURS AND GOBOS  
SOUND TO LIGHT, STAND ALONE UNIT

DAY: £15.00 WEEK: £45.00



## MARTIN ATOMIC 3000 DMX

MAX-15 XENON DISCHARGE LAMP  
VARIABLE STROBE: 0 - 650 MS  
STAND ALONE OR DMX 512 CONTROL  
1/3/4 DMX CHANNEL MODES  
3/5 PIN DMX IN/OUT  
SAFETY CABLE  
WEIGHT: 7,0 KG

DAY: £35.00 WEEK: £105.00



## 1500W STROBE

STAND ALONE OR DMX512 CONTROL  
3 PIN DMX IN/OUT  
SAFETY CABLE  
WEIGHT: 5.6 KG

DAY: £30.00 WEEK: £90.00

## GRIVEN 400W UV CANNON

LAMP: E40  
STAND ALONE ON/OFF  
SAFETY CABLE  
WEIGHT: 9KG

DAY: £25.00 WEEK: £75.00





## SHOWTEC SUNSTRIP ACTIVE DMX



10 X 75W GU10  
1/2/5/10 DMX CHANNEL MODES  
16 BUILT IN PROGRAMS/SOUND ACTIVE & DMX512  
5 PIN DMX IN/OUT  
POWERCON IN/OUT  
SAFETY CABLE  
WEIGHT: 5.3 KG

DAY: £20.00 WEEK: £60.00

## 1000W PAR64 LONG NOSE BLACK

LAMP: 1000W PAR64  
0.5 M 15/16AMP TAIL LEAD  
INCLUDES COLOUR FRAME  
SAFETY CABLE  
WEIGHT: 1.52 KG

DAY: £5.00 WEEK: £15.00



## 1000W PAR64 LONG NOSE CHROME

LAMP: 300W PAR56  
0.5 M 15/16AMP TAIL LEAD  
INCLUDES COLOUR FRAME  
SAFETY CABLE  
WEIGHT: 1.4 KG

DAY: £5.00 WEEK: £15.00



## 300W PAR56 LONG NOSE BLACK

LAMP: 300W PAR56  
0.5 M 15/16AMP TAIL LEAD  
INCLUDES COLOUR FRAME  
SAFETY CABLE  
WEIGHT: 1.15 KG

DAY: £4.00 WEEK: £12.00



### 300W PAR56 LONG NOSE CHROME

LAMP: 300W PAR56  
0.5 M 15/16AMP TAIL LEAD  
INCLUDES COLOUR FRAME  
SAFETY CABLE  
WEIGHT: 1.15 KG

DAY: £4.00 WEEK: £12.00



### PAR36 PINSPOT BLACK

LAMP: 4515 6V 30W, PAR 36  
0.5 M 13AMP TAIL LEAD  
SAFETY CABLE  
WEIGHT: 1.2 KG

DAY: £3.00 WEEK: £9.00

### PAR16 BIRDIE BLACK

LAMP: 300W PAR56  
0.5 M 15/16AMP TAIL LEAD  
INCLUDES COLOUR FRAME  
SAFETY CABLE  
WEIGHT: 1.05 KG

DAY: £1.50 WEEK: £4.50



### PAR16 BIRDIE CHROME

LAMP: 300W PAR56  
0.5 M 15/16AMP TAIL LEAD  
INCLUDES COLOUR FRAME  
SAFETY CABLE  
WEIGHT: 1.05 KG

DAY: £1.50 WEEK: £4.50





ETC SOURCE FOUR JR. ZOOM 25° - 50°

575W HPL LAMP  
 1.5 M 15AMP TAIL LEAD  
 INCLUDES COLOUR FRAME  
 INCLUDES HOLDERS FOR METAL & GLASS GOBOS  
 SAFETY CABLE  
 WEIGHT: 4.5 KG

DAY: £15.00 WEEK: £45.00

CCT MINUETTE 650W PROFILE 21° - 36°

650W LAMP  
 1.5 M 15AMP TAIL LEAD  
 INCLUDES COLOUR FRAME  
 SAFETY CABLE  
 WEIGHT: 3.6 KG

DAY: £12.00 WEEK: £36.00



CCT MINUETTE 650W FRESNEL 18° - 57°

650W LAMP  
 1.5 M 15AMP TAIL LEAD  
 INCLUDES COLOUR FRAME  
 SAFETY CABLE  
 WEIGHT: 2.2 KG

DAY: £12.00 WEEK: £36.00



STRAND SOLO 2KW CSI FOLLOWSPOT

1000W CSI LAMP G22 220/240V 50HZ  
 9° 1,700,000 CD, PK. ANGLE 6.5°  
 15° 1,020,000 CD, PK. ANGLE 10.25°  
 FLAT FIELD ADJUSTMENT  
 FOLLOWSPOT STAND  
 WEIGHT: 42 KG

DAY: £80.00 WEEK: £240.00



## ZERO88 BETA PACK 3

SIX CHANNEL 10A DIMMING CONTROL  
MCB PROTECTION  
RDM ENABLED  
1MTR 32AMP TAIL LEAD INPUT  
DMX INPUT VIA 5PIN  
WEIGHT: 8.0 KG

DAY: £25.00 WEEK: £75.00



## ZERO88 ALPHAPACK 2

THREE CHANNEL 6.3A DIMMING  
5PIN DMX IN/OUT

WEIGHT: 2.2 KG

DAY: £17.50 WEEK: £52.50

## ANYTRONICS PRO-DIM 10 LOCATION

SINGLE CHANNEL 10A DIMMING / SWITCHING  
INTERNAL 0-25% PREHEAT CONTROL  
DMX INPUT VIA 5PIN XLR OR RJ45  
WEIGHT: 3.0 KG

DAY: £15.00 WEEK: £45.00



LIGHTING - DIMMERS





## ULTIMAX 3MTR WIND-UP LIGHTING STAND

DAY: £12.00 WEEK: £36.00

## FOLLOWSPOT STAND

DAY: £12.00 WEEK: £36.00



## ULTIMAX TRUSS ADAPTOR FOR WIND-UP STAND

DAY: £3.00 WEEK: £9.00

## DMX TERMINATOR

DAY: £0.50 WEEK: £1.50





## MARTIN WIZARD EXTREME

LAMP: MSD 250  
 7 SOLID COLOURS, 8 SPLIT COLOURS, 2 OPEN POSITIONS  
 13 GOBOS + OPEN  
 STAND ALONE OR DMX 512  
 3PIN DMX IN/OUT  
 SAFETY CABLE  
 WEIGHT: 14.5 KG

DAY: £20.00 WEEK: £60.00

## MARTIN DC-1 MANIA

100W HALOGEN LAMP  
 53° SPREAD ANGLE  
 3 COLOUR + OPEN AND SPLIT COLOUR OPTION  
 MANUAL FOCUS  
 VARIABLE EFFECT ROTATION SPEED & DIRECTION  
 STAND ALONE MODE  
 SAFETY CABLE  
 WEIGHT: 8.9 KG

DAY: £15.00 WEEK: £45.00



## MARTIN PR-1 MANIA

PHILLIPS 6958/10H 250W  
 MANUAL FOCUS WITH 25° OR 32° SPREAD ANGLE  
 COLOUR SLOT FOR INTERCHANGEABLE COLOUR FILTER  
 ROTATING INTERCHANGEABLE GOBO  
 VARIABLE EFFECT ROTATION SPEED & DIRECTION  
 STAND ALONE MODE  
 SAFETY CABLE  
 WEIGHT: 8.9 KG

DAY: £15.00 WEEK: £45.00





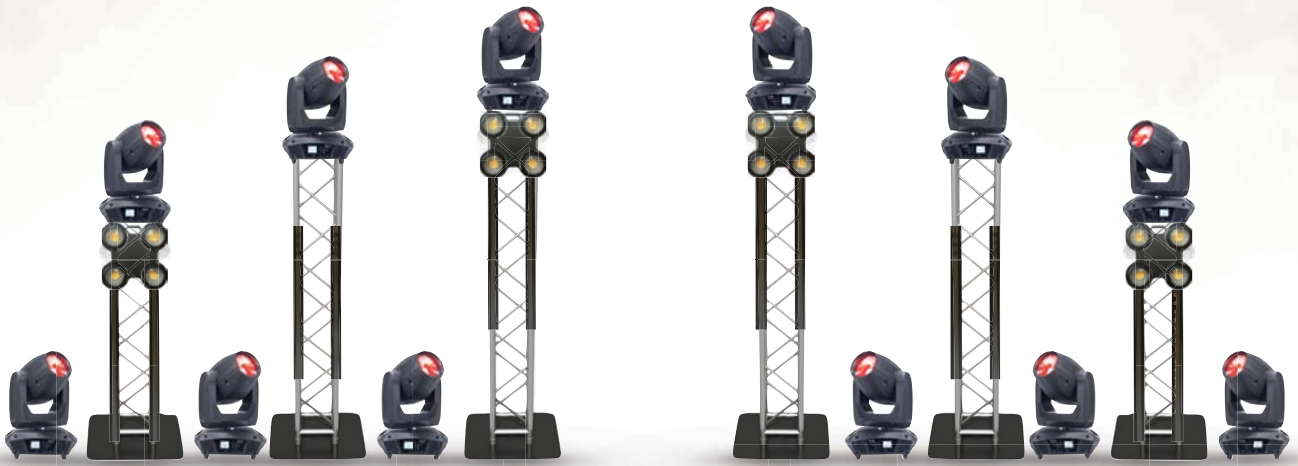


## BAND LIGHTING PACKAGE 1

- 8 X ELATION PLATINUM 5R BEAM
- 8 X MILTEC BATTEN 2
- 4 X CHAUVET STRIKE 4
- 1 X LOOK SOLUTIONS UNIQUE 2.1 HAZER
- 1 X GRAND MA ONPC COMMAND WING CONSOLE
- 2 X 2M TRUSS TOWERS
- 2 X 1.5 M TRUSS TOWERS

DAY: £950.00 WEEK: £2100.00

# BAND PACKAGES - BAND LIGHTING PACKAGES

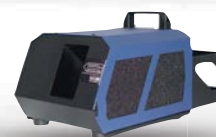
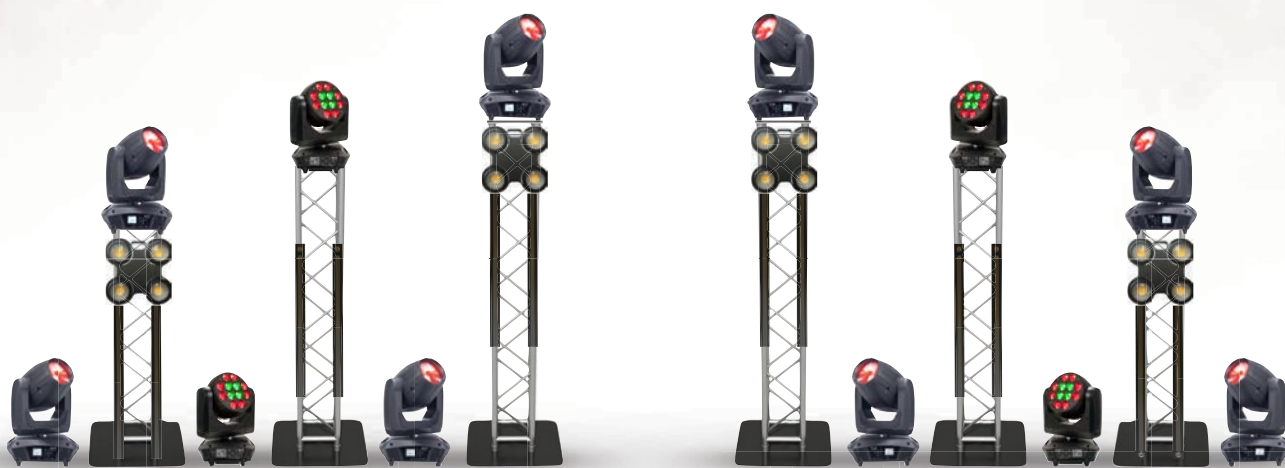


## BAND LIGHTING PACKAGE 2

- 12 X ELATION PLATINUM 5R BEAM
- 12 X MILTEC BATTEN 2
- 4 X CHAUVET STRIKE 4
- 1 X LOOK SOLUTIONS UNIQUE 2.1 HAZER
- 1 X GRAND MA ONPC COMMAND WING CONSOLE
- 2 X 2M TRUSS TOWERS
- 2 X 1.7M TRUSS TOWERS
- 2 X 1.5 M TRUSS TOWERS

DAY: £1300.00 WEEK: £3900.00

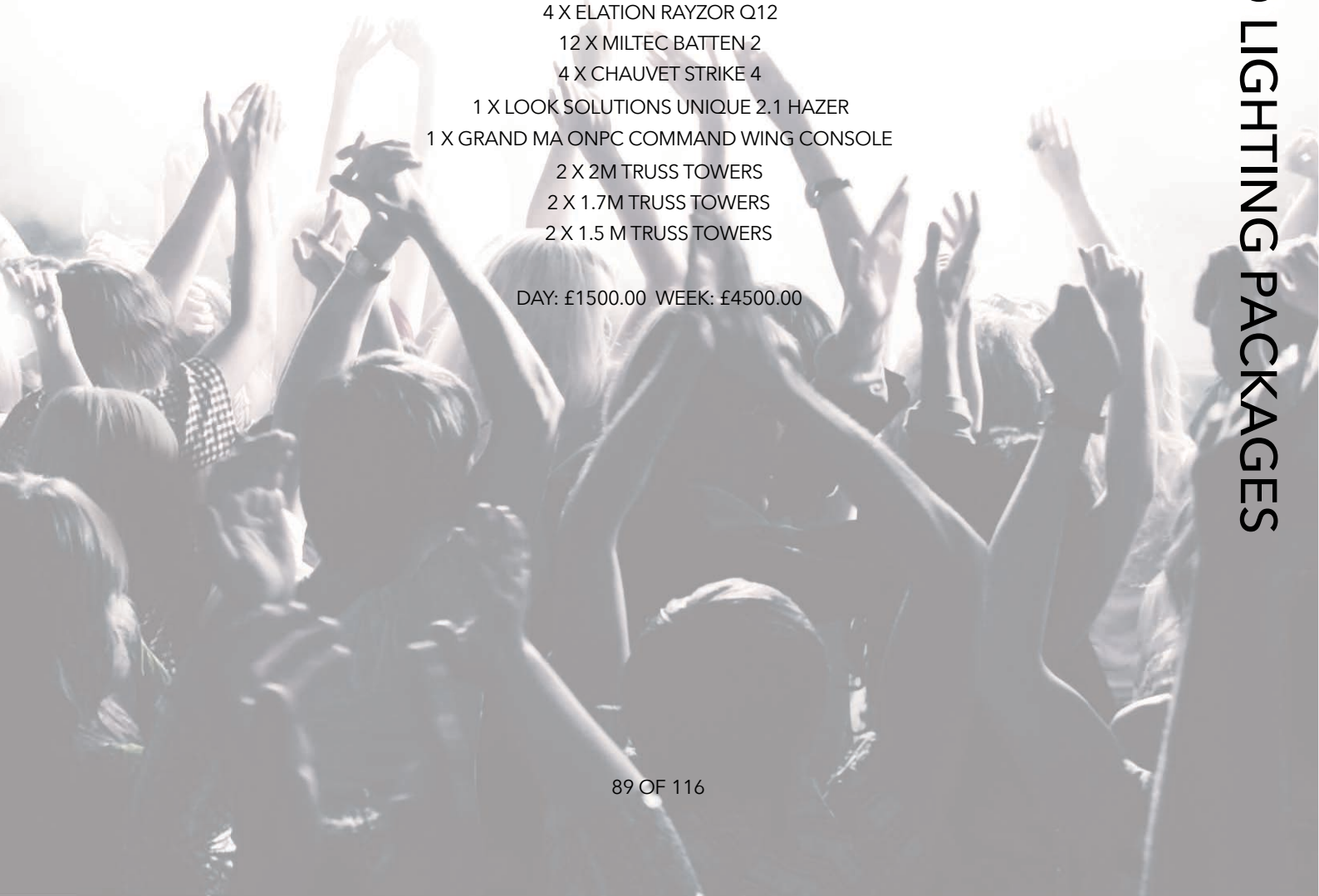




### BAND LIGHTING PACKAGE 3

- 8 X ELATION PLATINUM 5R BEAM
- 4 X ELATION RAYZOR Q12
- 12 X MILTEC BATTEN 2
- 4 X CHAUVET STRIKE 4
- 1 X LOOK SOLUTIONS UNIQUE 2.1 HAZER
- 1 X GRAND MA ONPC COMMAND WING CONSOLE
- 2 X 2M TRUSS TOWERS
- 2 X 1.7M TRUSS TOWERS
- 2 X 1.5 M TRUSS TOWERS

DAY: £1500.00 WEEK: £4500.00

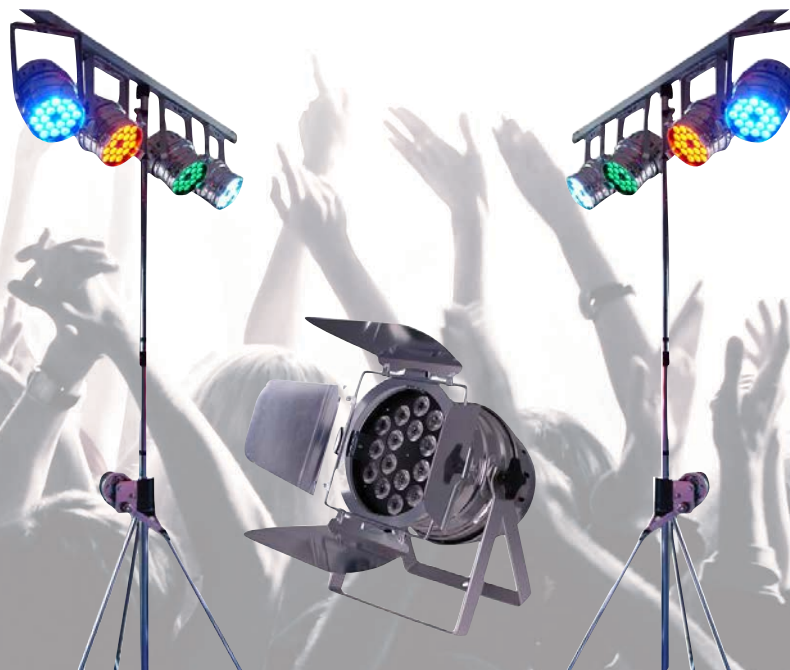




### PARTY LIGHTING PACKAGE 1 (PL1)

- 4 X QUAD LED PAR64
- 1 X WIND UP STAND (MAX HEIGHT 2.8M)
- 1 X POWER CON LEAD  
(SOUND TO LIGHT CONTROL)

DAY: £60.00 WEEK: £180.00



### PARTY LIGHTING PACKAGE 2 (PL2)

- 8 X QUAD LED PAR64
- 2 X WIND UP STAND (MAX HEIGHT 2.8M)
- 2 X POWER CON LEAD  
(SOUND TO LIGHT CONTROL)

DAY: £120.00 WEEK: £360.00



### PARTY LIGHTING PACKAGE 3 (PL3)

- 1 X MARTIN DESTROYER (MOON FLOWER EFFECT)
- 1 X MARTIN DC-1 (FLUID EFFECT)
- 1 X SPIN250 (MOON FLOWER EFFECT)
- 1 X STAR CLUSTER LASER (200 POINTS)
- 1 X WIND UP STAND (MAX HEIGHT 2.8M)
- 1 X POWER CON LEAD  
(SOUND TO LIGHT CONTROL)

DAY: £90.00 WEEK: £270.00



### PARTY LIGHTING PACKAGE 4 (PL4)

- 1 X MARTIN DESTROYER (MOON FLOWER EFFECT)
- 1 X MARTIN DC-1 (FLUID EFFECT)
- 1 X SPIN250 (MOON FLOWER EFFECT)
- 1 X STAR CLUSTER LASER (200 POINTS)
- 1 X WIND UP STAND (MAX HEIGHT 2.8M)
- 1 X POWER CON LEAD  
(SOUND TO LIGHT CONTROL)

DAY: £180.00 WEEK: £540.00



# TERMS AND CONDITIONS

## 1. DEFINITIONS AND LAW

- 1.1. "THE EQUIPMENT" SHALL MEAN GOODS, COMPONENTS AND OTHER ITEMS HIRED OR SOLD BY ALG LIVE EVENTS LTD. OR ANY PART THEREOF
- 1.2. "THE CUSTOMER" IS THE PERSON, RM, CORPORATE OR PUBLIC BODY HIRING OR PURCHASING THE EQUIPMENT. ANY PERSON PURPORTING TO ACT ON BEHALF OF THE CUSTOMER SHALL BE BOUND BY THE CONTRACT
- 1.3. "CONSEQUENTIAL LOSS" SHALL MEAN LOSS OF PROFITS, CONTRACTS OR OTHER CONSEQUENTIAL LOSS OR DAMAGES WHATSOEVER
- 1.4. "INTEREST" SHALL MEAN INTEREST CALCULATED IN ACCORDANCE WITH CLAUSE 4.1
- 1.5. THE CONTRACT SHALL BE INTERPRETED AND APPLIED IN ACCORDANCE WITH ENGLISH LAW AND THE PARTIES TO THIS CONTRACT AGREE TO SUBMIT TO THE EXCLUSIVE JURISDICTION OF THE ENGLISH COURTS

## 2. HIRE TERMS

### 2.1. CHARGES

- 2.1.1. HIRE CHARGES COMMENCE FROM THE DATE STATED IN THE CONTRACT AND ARE PAYABLE FOR THE PERIOD OF HIRE
- 2.1.2. EQUIPMENT MUST BE RETURNED BY 12 NOON ON THE DATE SPECIFIED IN THE CONTRACT IN A CLEAN AND SERVICEABLE CONDITION AND THE CUSTOMER MUST OBTAIN THE SUPPLIER'S RECEIPT
- 2.1.3. ADDITIONAL CHARGES ACCRUE AT THE FULL DAILY HIRE RATE TOGETHER WITH CONSEQUENTIAL LOSS IN THE EVENT OF THE BREACH OF THESE CONDITIONS OR THE EQUIPMENT NOT BEING AVAILABLE FOR USE BY OTHER CUSTOMERS
- 2.1.4. ALL CABLES MUST BE RETURNED COILED AND TAPED AND IN DEFAULT A CHARGE OF £2 PER CABLE WILL BE MADE
- 2.1.5. ALG LIVE EVENTS LTD. PROVIDES SPARE LAMPS AND FUSES WITH EQUIPMENT WHERE APPROPRIATE. THESE AND ANY LAMPS AND FUSES THEY REPLACE MUST BE RETURNED WITH THE EQUIPMENT AND IN DEFAULT THEIR FULL REPLACEMENT COST WILL BE CHARGED
- 2.1.6. ALL CHARGES ARE PAYABLE ON DEMAND

### 2.2. HIRE PERIOD

- 2.2.1. THE HIRING PERIOD COMMENCES AT 12 NOON ON THE DATE SPECIFIED IN THE CONTRACT AND CONTINUES FOR THE PERIOD SPECIFIED IN THE CONTRACT AND TERMINATES AT 12 NOON ON THE LAST DAY OF THE HIRING PERIOD

### 2.3. POWER TO ENTER THIS CONTRACT

- 2.3.1. THE SIGNATORY TO THE CONTRACT WARRANTS THAT THEY ARE DULY AUTHORISED ON THE CUSTOMER'S BEHALF TO ENTER INTO THE CONTRACT AND HEREBY PERSONALLY INDEMNIFIES ALG LIVE EVENTS LTD. AGAINST ALL LOSSES AND COSTS THAT MAY BE INCURRED BY ALG LIVE EVENTS LTD. IF THIS IS NOT THE CASE

### 2.4. CUSTOMER'S RESPONSIBILITIES

- 2.4.1. THE CUSTOMER'S RESPONSIBILITY FOR THE EQUIPMENT COMMENCES ON RECEIPT OF THE EQUIPMENT BY THE CUSTOMER OR HIS AGENT OR ON DELIVERY AND ENDS WHEN THE CUSTOMER IS IN POSSESSION OF ALG LIVE EVENTS LTD'S UNQUALIFIED RECEIPT FOR THE RETURN OF ALL THE EQUIPMENT
- 2.4.2. THE CUSTOMER SHALL NOT AT ANY TIME SELL DISPOSE OR OTHERWISE PART WITH CONTROL OF THE EQUIPMENT OR ATTEMPT TO DO SO
- 2.4.3. THE SIGNATORY TO THE CONTRACT AND THE CUSTOMER JOINTLY AND SEVERALLY UNDERTAKE WITH ALG LIVE EVENTS LTD. THAT EVERYONE WHO USES THE EQUIPMENT HAS BEEN PROPERLY INSTRUCTED IN ITS SAFE AND PROPER OPERATION AND WILL ENSURE THAT EVERY USER IS IN POSSESSION OF NECESSARY INSTRUCTIONAL MATERIAL AND FURTHER WILL NOT ALLOW THE EQUIPMENT TO BE MISUSED
- 2.4.4. THE CUSTOMER WILL AT ALL TIMES FULLY INDEMNIFY ALG LIVE EVENTS LTD. AGAINST ANY EXPENSE LIABILITY FINANCIAL LOSS CLAIM OR PROCEEDINGS WHATSOEVER IN RESPECT OF ANY PERSONAL INJURY OR DAMAGE TO OR LOSS OF ANY PROPERTY ARISING OUT OF OR IN CONNECTION WITH THE DELIVERY HIRE USE NON USE REPOSSESSION COLLECTION RETURN OR NON RETURN OF THE EQUIPMENT
- 2.4.5. NOTHING IN THIS CLAUSE SHALL AFFECT THE STATUTORY RIGHTS OF THE CUSTOMERS OR PURPORT TO EXCLUDE ANY LIABILITY WHICH MAY NOT BE EXCLUDED UNDER THE UNFAIR CONTRACT TERMS ACT 1977

### 2.5 ELECTRICAL EQUIPMENT

- 2.5.1. ANY ELECTRICAL EQUIPMENT SHOULD BE USED WITH PLUGS AND/OR SOCKETS AS FITTED
- 2.5.2. IF OTHER PLUGS OR SOCKETS ARE TO BE FITTED BY THE CUSTOMER SUCH WORK SHALL BE CARRIED OUT BY A COMPETENT PERSON WHO SHALL ALSO REINSTATE THE SAME TO THE ORIGINAL CONDITION PRIOR TO REDELIVERY
- 2.5.3. THE CUSTOMER SHALL BE RESPONSIBLE AT ALL TIMES TO ARRANGE A PROPER SUPPLY OF ELECTRICITY FOR USE WITH THE EQUIPMENT AND ENSURE THAT THE EQUIPMENT SHALL AT ALL TIMES BE PROPERLY EARTHED

### 2.6. EQUIPMENT MAINTENANCE AND REPORTING

- 2.6.1. THE CUSTOMER SHALL ENSURE THAT THE EQUIPMENT REMAINS SERVICEABLE AND CLEAN DURING THE HIRE PERIOD
- 2.6.2. ANY BREAKDOWN OR UNSATISFACTORY WORKING OF EQUIPMENT SHALL BE IMMEDIATELY NOTIFIED TO ALG LIVE EVENTS LTD.
- 2.6.3. THE CUSTOMER SHALL UNDER NO CIRCUMSTANCES ATTEMPT TO REPAIR THE EQUIPMENT WITHOUT PRIOR AUTHORISATION FROM ALG LIVE EVENTS LTD.
- 2.6.4. ANY DAMAGED OR UNSATISFACTORY EQUIPMENT MUST BE RETURNED TO ALG LIVE EVENTS LTD'S PREMISES FOR EXAMINATION AT THE CUSTOMER'S COST

- 2.6.5. IF THE EQUIPMENT IS INVOLVED IN ANY ACCIDENT RESULTING IN DAMAGE TO EITHER THE EQUIPMENT OR OTHER PROPERTY OR INJURY TO ANY PERSON THE CUSTOMER SHALL NOTIFY ALG LIVE EVENTS LTD. IMMEDIATELY

- 2.6.6. EQUIPMENT MUST NOT BE REMOVED FROM ANY SITE ORIGINALLY SPECIFIED BY THE CUSTOMER OR FROM ANY SUBSEQUENTLY AUTHORISED SITE WITHOUT PRIOR CONSENT OF ALG LIVE EVENTS LTD.

### 2.7. COMPATIBILITY OF EQUIPMENT

- 2.7.1. THE CUSTOMER SHALL ENSURE THAT THE EQUIPMENT IS COMPATIBLE AND MAY SAFELY BE USED WITH ANY OTHER EQUIPMENT BEING USED BY THE CUSTOMER
- 2.7.2. THE CUSTOMER SHALL BE RESPONSIBLE FOR ENSURING THAT ANY EQUIPMENT IS SUITABLE FOR THEIR PURPOSES

### 2.8 INSURANCE

- 2.8.1. THE CUSTOMER AGREES TO PAY ALG LIVE EVENTS LTD. THE FULL RETAIL COST OF ANY EQUIPMENT LOST STOLEN OR DAMAGE BEYOND ECONOMIC REPAIR (WITHOUT DEDUCTION FOR USAGE WEAR TEAR OR AGE)
- 2.8.2. THE CUSTOMER SHALL INSURE THE GOODS AGAINST THE ABOVE LIABILITY
- 2.8.3. ALL MONIES RECEIVED BY THE CUSTOMER FROM ANY INSURANCE COMPANY OR THIRD PARTY IN SETTLEMENT OF ANY CLAIM SHALL BE HELD IN TRUST BY THE CUSTOMER AND PAID TO ALG LIVE EVENTS LTD. ON DEMAND TO THE EXTENT THAT ANY SUCH PAYMENT IS DUE UNDER THIS CLAUSE
- 2.8.4. THE CUSTOMER SHALL NOT COMPROMISE OR SETTLE ANY CLAIM WITHOUT THE EXPRESS CONSENT OF ALG LIVE EVENTS LTD.

2.8.5. IN THE CASE OF EQUIPMENT WHICH IS LOST STOLEN OR DAMAGED BEYOND ECONOMIC REPAIR THE CUSTOMER SHALL PAY A CHARGE AT THE FULL DAILY RATE TOGETHER WITH INTEREST AND CONSEQUENTIAL LOSS UNTIL THE EQUIPMENT IS REPLACED

2.9. CONDITION OF RETURNED EQUIPMENT

2.9.1. THE CUSTOMER IS FULLY RESPONSIBLE FOR CARE SAFE KEEPING AND RETURN IN GOOD ORDER OF THE EQUIPMENT

2.9.2. THE CUSTOMER WILL REIMBURSE ALL COSTS INCURRED BY ALG LIVE EVENTS LTD. IN RECTIFYING THE CONDITION OF ANY EQUIPMENT RETURNED DAMAGED OR UNCLEAN AND SHALL IN ADDITION PAY A CHARGE AT THE FULL DAILY HIRE RATE TOGETHER WITH INTEREST AND ANY CONSEQUENTIAL LOSS UNTIL RECTIFICATION

2.10. TERMINATION OF HIRE

2.10.1. ALG LIVE EVENTS LTD. SHALL BE ENTITLED TO TERMINATE THE CONTRACT WITH IMMEDIATE EFFECT AND TO REPOSSESS THE EQUIPMENT IF AT ANY TIME:

(A) THE CUSTOMER IS IN BREACH OF THESE TERMS; OR

(B) THE CUSTOMER SHALL TAKE ANY STEPS OR IF ANY ACT OR PROCEEDING IS COMMENCED IN WHICH THE CUSTOMER'S SOLVENCY IS IN THE REASONABLE VIEW OF ALG LIVE EVENTS LTD. IN DOUBT. SUCH TERMINATION SHALL NOT AFFECT THE RIGHT OF ALG LIVE EVENTS LTD. TO RECOVER FROM THE CUSTOMER ANY MONIES DUE UNDER THIS CONTRACT INTEREST CONSEQUENTIAL LOSS OR DAMAGES FOR BREACH

2.10.2. THE CUSTOMER HEREBY AUTHORISES ALG LIVE EVENTS LTD. TO ENTER UPON ANY PROPERTY UPON WHICH ALG LIVE EVENTS LTD. REASONABLY BELIEVE ANY EQUIPMENT TO BE AND ALG LIVE EVENTS LTD. IN THEIR ABSOLUTE DISCRETION MAY RECOVER AND REMOVE THE EQUIPMENT

2.11. THE CUSTOMER HEREBY AUTHORISES ALG LIVE EVENTS LTD. (NOTWITHSTANDING ANY SUBSEQUENT INSTRUCTION TO THE CONTRARY AFTER THE DATE OF THE COMMENCEMENT OF THE CONTRACT) TO DEDUCT ANY SUMS PROPERLY DUE TO ALG LIVE EVENTS LTD. ARISING UNDER A BREACH OF THESE TERMS FROM ANY CREDIT CARD DEBIT CARD OR CHARGE ACCOUNT DETAILS OF WHICH ARE IN THE POSSESSION OF ALG LIVE EVENTS LTD.

### 3. CONDITIONS AS TO SALE

3.1. RISK IN TITLE

3.1.1. THE RISK IN THE EQUIPMENT SHALL PASS TO THE CUSTOMER IMMEDIATELY ON DELIVERY TO THE CUSTOMER AT THE ADDRESS SHOWN FOR DELIVERY ON THE CONTRACT OR IF THE CUSTOMER COLLECTS ON COLLECTION

3.1.2. PROPERTY AND TITLE IN THE EQUIPMENT SHALL REMAIN VESTED IN ALG LIVE EVENTS LTD. AND ALG LIVE EVENTS LTD. RESERVE THE RIGHT TO DISPOSE OF THE EQUIPMENT UNTIL SUCH TIME AS THE PRICE SHALL HAVE BEEN PAID IN FULL

3.1.3. IF ANY PART OF THE PAYMENT IS OVERDUE OR IF THE CUSTOMER IS IN BREACH OF ANY OF THESE TERMS OR IF THE CUSTOMER OR ANY THIRD PARTY SHALL TAKE ANY STEPS OR ANY ACT OR PROCEEDING IN WHICH IN THE REASONABLE VIEW OF ALG LIVE EVENTS LTD. THE CUSTOMER'S SOLVENCY IS IN DOUBT ALG LIVE EVENTS LTD. MAY (WITHOUT PREJUDICE TO ANY OF ALG LIVE EVENTS LTD.' OTHER RIGHTS) RECOVER OR RESELL THE EQUIPMENT AND MAY ENTER UPON THE CUSTOMER'S OR ANY THIRD PARTIES PROPERTY FOR THAT PURPOSE

3.2. RECEIPT

3.2.1. THE CUSTOMER OR ANY DULY AUTHORISED PERSON ON BEHALF OF THE CUSTOMER SHALL RECEIVE AND UNLOAD THE EQUIPMENT AND SHALL CHECK THE SAME FOR QUANTITY AND CONDITION IN THE PRESENCE OF ALG LIVE EVENTS LTD.' CARRIER

3.2.2. ANY SHORTAGE OF OR UNSATISFACTORY EQUIPMENT SHALL BE ENDORSED BY THE CUSTOMER OR A DULY AUTHORISED PERSON ON BEHALF OF THE CUSTOMER ON THE DELIVERY DOCUMENT AND THE CUSTOMER SHALL GIVE WRITTEN CONFIRMATION TO ALG LIVE EVENTS LTD. WITHIN THREE DAYS OF DELIVERY

3.2.3. NO CLAIM IN RESPECT OF SHORTAGE OF OR UNSATISFACTORY CONDITION OF THE EQUIPMENT SHALL BE ENTERTAINED BY ALG LIVE EVENTS LTD. UNLESS CONDITION

3.2.2. IS OBSERVED

3.2.4. THIS CONDITION DOES NOT AFFECT THE STATUTORY RIGHTS OF THE CUSTOMER

3.3. PRICE

3.3.1. THE PRICE CHARGED WILL BE THE PRICE RULING AT THE TIME OF DELIVERY. WHERE THIS IS AT VARIANCE WITH THE PRICE QUOTED OR INSERTED IN THE CONTRACT AT THE TIME THE GOODS WERE ORDERED THE CUSTOMER WILL BE ADVISED PRIOR TO DELIVERY

3.4. PAYMENT

3.4.1. WHERE ACCOUNT FACILITIES HAVE BEEN GRANTED TO THE CUSTOMER IN WRITING ALL INVOICES MUST BE PAID WITHIN 15 DAYS OF INVOICE DATE

3.4.2. WHERE NO SUCH FACILITIES HAVE BEEN GRANTED PAYMENT WILL BE WITH ORDER OR WHERE PREVIOUSLY AGREED ON DELIVERY

4. CONDITIONS APPLICABLE TO BOTH HIRE AND SALE

4.1. PAYMENT AND INTEREST

4.1.1. WHERE PAYMENTS ARE NOT MADE ON THE DUE DATE

ALG LIVE EVENTS LTD. WILL BE ENTITLED TO INTEREST ON THE AMOUNT THAT IS OVERDUE AT BARCLAYS BANK PLC BASE RATE PREVAILING FOR THE PERIOD FOR WHICH SUCH MONIES ARE OVERDUE TOGETHER WITH 4% CALCULATED ON A DAY TO DAY BASIS COMPOUNDED WITH QUARTERLY RESTS

4.1.2. THE PAYMENT OF SUCH INTEREST SHALL BE WITHOUT PREJUDICE TO ANY OTHER RIGHTS OR REMEDIES OF ALG LIVE EVENTS LTD.

4.1.3. ANY LEGAL OR OTHER CHARGES INCURRED IN THE RECOVERY OF MONEY OR EQUIPMENT SHALL BE PAID BY THE CUSTOMER

4.1.4. NOTWITHSTANDING ANY PROVISION IN THESE TERMS OF BUSINESS TO THE CONTRARY THE CUSTOMER SHALL IF REQUIRED BY ALG LIVE EVENTS LTD. PAY SUCH SUM ON ACCOUNT OF THE HIRE CHARGES OR PRICE FOR GOODS AND OR SERVICES AS SHALL BE AGREED AT THE TIME OF PLACING THE ORDER

4.2. LIABILITY

4.2.1. ALG LIVE EVENTS LTD.'S LIABILITY FOR ANY DEFECT IN THE EQUIPMENT SHALL BE LIMITED TO AND IN NO CASE EXCEED:

(A) ANY MANUFACTURER'S WARRANTY SOLD WITH THE EQUIPMENT; OR IF THERE SHALL BE NONE

(B) REPLACEMENT OR REPAIR OF THE DEFECTIVE EQUIPMENT; OR

(C) AT ALG LIVE EVENTS LTD.' OPTION A REFUND OF THE PRICE

4.2.2. CONSEQUENTIAL LOSSES

NOTHING IN THESE TERMS AND CONDITIONS SHALL MAKE ALG LIVE EVENTS LTD. LIABLE FOR ANY CONSEQUENTIAL LOSS TO THE CUSTOMER INCLUDING ANY EXPENSE LIABILITY LOSS CLAIM OR PROCEEDING WHATSOEVER CAUSED BY OR ARISING OUT OF THE LATE DELIVERY NON DELIVERY UNSUITABILITY INCOMPATIBILITY OR UNLAWFUL REPOSSESSION OF THE EQUIPMENT OR ANY PART THEREOF OR ANY BREAKDOWN OR STOPPAGE OF THE SAME

4.3. INJURY TO PERSONS AND DAMAGE TO PROPERTY

4.3.1. SUBJECT TO 4.2. ABOVE ALG LIVE EVENTS LTD. SHALL NOT BE LIABLE FOR ANY LOSS OTHER THAN THAT WHICH DIRECTLY ARISES FROM ANY INJURY TO PERSONS OR DAMAGE TO TANGIBLE PROPERTY WHERE AND ONLY TO THE EXTENT THAT SUCH INJURY OR DAMAGE IS CAUSED BY ANY DEFECTS IN THE EQUIPMENT AND WHERE SUCH DEFECT IS CAUSED BY THE NEGLIGENCE OF ALG LIVE EVENTS LTD.



4.4. RIGHTS RESERVED

4.4.1. ANY FAILURE BY ALG LIVE EVENTS LTD. TO ENFORCE ANY OR ALL OF THESE CONDITIONS SHALL NOT BE CONSTRUED AS A WAIVER OF ANY OF ALG LIVE EVENTS LTD.' RIGHTS HEREUNDER

4.4.2. IF ANY TERM IN THIS CONTRACT SHALL BE HELD INVALID SUCH INVALIDATION SHALL NOT AFFECT THE VALIDITY OF THE REMAINING TERMS

4.5. TERMS OF CONTRACT

4.5.1. THESE CONDITIONS HAVE EFFECT IN SUBSTITUTION FOR AND TO THE EXCLUSION OF ANY CONDITION PUT FORWARD BY THE CUSTOMER

4.6. DELIVERY AND CARRIAGE

4.6.1. ALL TIMES QUOTED OR STATED FOR DELIVERY ARE APPROXIMATE ONLY

4.6.2. HIRE CHARGES OR SALE PRICES DO NOT INCLUDE CARRIAGE. ANY EXPENSES INCURRED BY ALG LIVE EVENTS LTD. IN DELIVERY OR RECOVERING EQUIPMENT OR ATTEMPTING THE SAME WILL BE PAID BY THE CUSTOMER

4.6.3. WHERE CARRIAGE CHARGES ARE QUOTED BY ALG LIVE EVENTS LTD. SUCH CHARGES WILL INCLUDE ONLY FOR THE TIME TO LOAD OR UNLOAD ALONGSIDE THE ALG LIVE EVENTS LTD.' VEHICLE AT THE ADDRESS SPECIFIED BY THE CUSTOMER. FURTHER TIME OR ATTENDANCE WILL BE PAID FOR BY THE CUSTOMER

4.7. COPYRIGHT

4.7.1. ALG LIVE EVENTS LTD. NOTIFIES THE CUSTOMER THAT PLAYING OR SHOWING COPYRIGHT MATERIAL IN CIRCUMSTANCES WHERE THE CUSTOMER OR ANYONE AUTHORISED BY HIM DOES NOT HOLD THE APPROPRIATE LICENCE OF THE COPYRIGHT HOLDER HE WILL INFRINGE COPYRIGHT AND MAY BECOME LIABLE IN DAMAGES FOR SO DOING

4.7.2. THE CUSTOMER BY ACCEPTING DELIVERY OF SOUND OR VISUAL REPRODUCTION EQUIPMENT WARRANTS THAT HE HAS OR WILL OBTAIN THE APPROPRIATE LICENCE FOR THE SAID PERFORMANCE PLAYING OR SHOWING. PRIOR TO USING THE EQUIPMENT FOR THE SAID PURPOSE

**FOR MORE INFORMATION CONTACT US:**

**ALG LIVE EVENTS,  
INGOT BUILDING, FIRST FLOOR  
95 CHARLOTTE ROAD, STIRCHLEY, BIRMINGHAM,  
B30 2BT  
T: 0121 458 4457  
F: 0121 459 2740 M: 0791 876 5593  
E: [INFO@ALG-UK.COM](mailto:INFO@ALG-UK.COM) W: [WWW.ALG-UK.COM](http://WWW.ALG-UK.COM)**



# ALG

## Live Events

ALG LIVE EVENTS,  
INGOT BUILDING, FIRST FLOOR,  
95 CHARLOTTE ROAD, STIRCHLEY, BIRMINGHAM,  
B30 2BT

0121 458 4457

0791 876 5593

[INFO@ALG-UK.COM](mailto:INFO@ALG-UK.COM)

[WWW.ALG-UK.COM](http://WWW.ALG-UK.COM)

